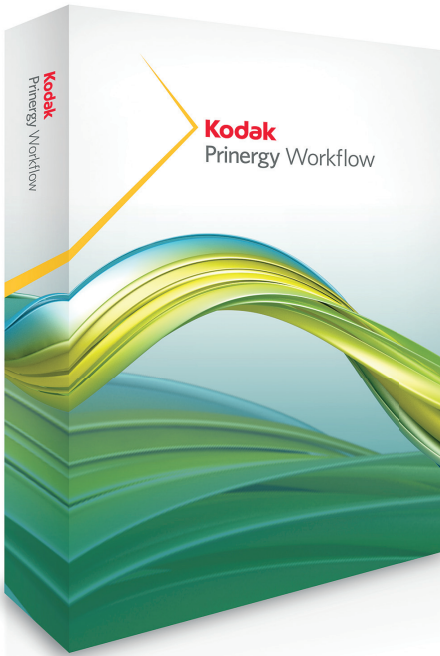




Kodak Prinergy
Workflow

Software Options

Customize, Extend and Connect



Kodak Priner Workflow is the trusted production hub for commercial, packaging and publishing printers around the world. Its open infrastructure integrates conventional and digital print production, automates and optimizes file processing and production management, drives proofers, computer-to-plate devices and presses, and connects Kodak and third-party systems.

Priner Systems are modular and extensible, and available in a range of configurations for any print production environment, from short runs to the largest jobs, for digital, conventional and packaging printing. They can be custom tailored with the features and capabilities to meet the most unique and demanding production requirements.

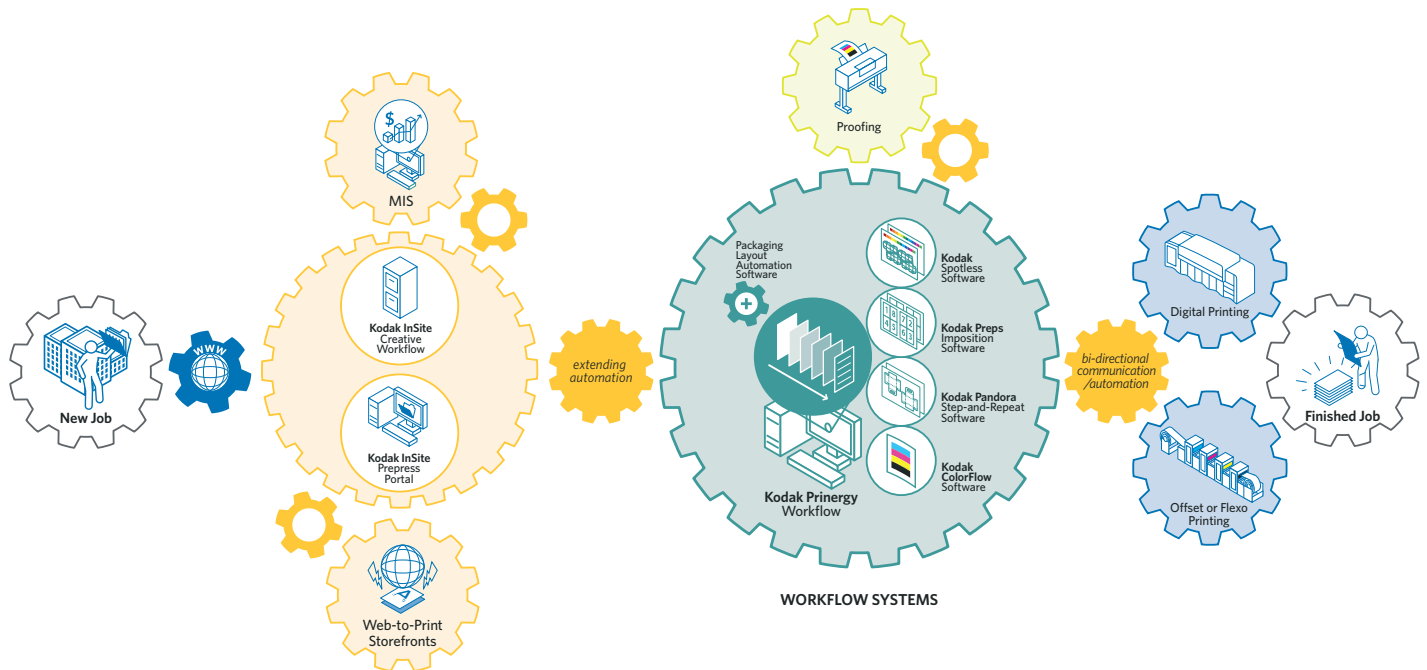
Kodak offers a comprehensive suite of licensable options to increase the power, improve the flexibility, and grow the revenue potential of your **Priner Workflow**. You can build the workflow you need today, with the confidence that you can expand its capabilities as your business grows into the future.



Rules-Based Automation: the new generation of workflow automation

Priner Rules-Based Automation Software (RBA) is powerful, intelligent automation designed to eliminate human decisions and touchpoints—and drive down costs in your workflow. And it's only available as an option for **Priner Workflow**.

RBA is logic-based automation. It allows you to specify simple, impactful rules: *if event X occurs, perform action Y*. It runs in the background waiting for the specified event. Then it immediately triggers the specified action. With RBA, you can create automatic rules for any existing manual event, business process, or step in a print production workflow. RBA saves time and money, increases job volume and reduces error.



Kodak Prinergy Workflow diagram depicting a common commercial or publication workflow process

Automation and Reporting

Rules-Based Automation (RBA)

- Programmable workflow automation based on monitoring for an event, and when that event occurs, performing an action.

Packaging Layout Automation (PLA)

- Automates the creation of complex press sheet layouts. PLA validates the job intent with your shop's equipment and capabilities so that production layouts can be automatically generated upon receipt of XML data from MIS and ERP systems.
- Reduces operating costs through the re-use of existing templates or previously used production layouts. Maximizes media usage and drives accuracy and timesaving to new levels, eliminating redundant data entry.
- For advanced editing requirements, PLA creates layouts that are fully compatible with **Kodak Pandora** Step-and-Repeat Software.

Business Link

- Enables two-way communication between a **Prinergy** System and qualified management information systems (MIS) using JDF.
- Allows automated job creation and set-up, via the exchange of product- and process-related JDF data between the MIS and **Prinergy** Workflow.
- Imposition information from an MIS can be automatically imported or used to create impositions for **Prinergy** Software. The material and status type information that is automatically gathered by Business Link during the production process can be sent to an MIS, allowing automated tracking of materials and distribution of status information from **Prinergy** Workflow and **Kodak InSite** Solutions in the MIS.
- Includes production reports that allow users to run several pre-configured reports from a web-based interface, independent of an MIS.

Color Management

Kodak ColorFlow Software Pro

- Upgrade for **ColorFlow** Software Workflow Edition.
- Adds the ability to create and edit ICC device profiles and ICC DeviceLink profiles. Stores the various color tonal curves, DeviceLink profiles, and ICC profiles and aligns them for consistent color production.

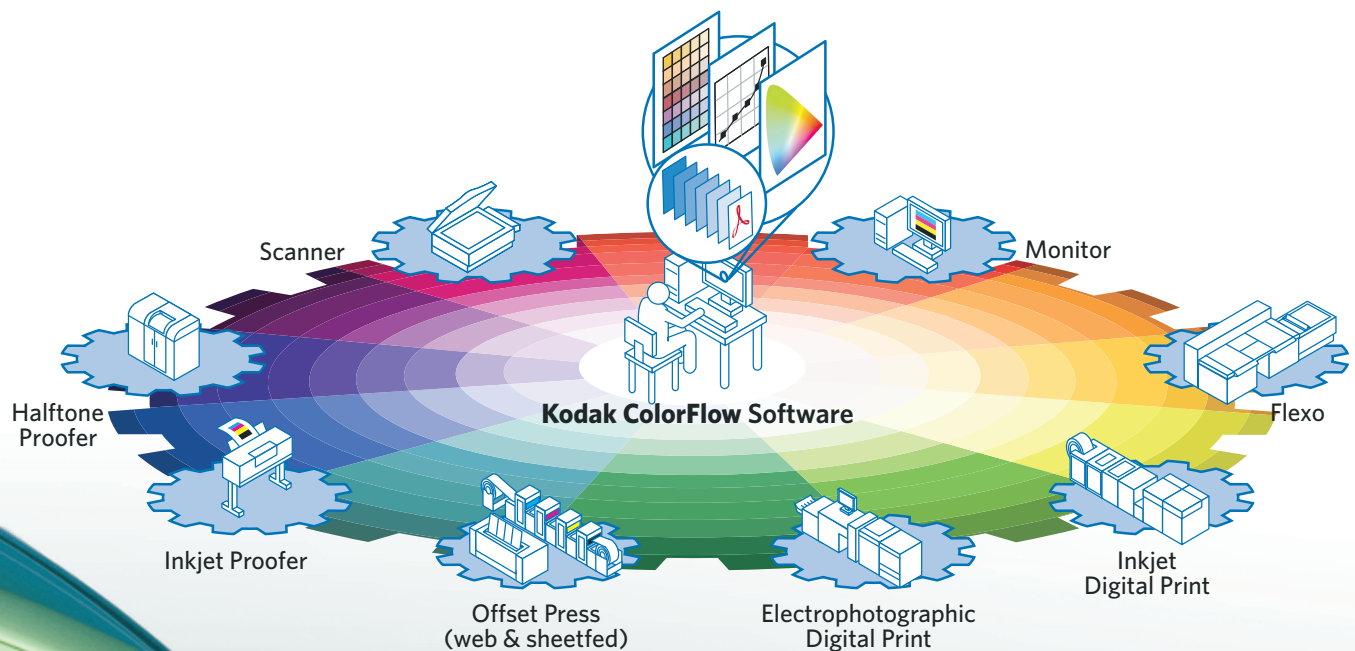
Kodak Ink Optimizing Solution

- Upgrade for **ColorFlow** Software Pro.
- Saves ink, shortens make-readies and improves press stability by applying sophisticated color-conversion intelligence to measure color blends, then converts them to ink-reduced blends that create the same visual result on press.

Kodak Spotless Software

- 4-color
- n-color

- For replacing spot colors with process color recipes in digital, flexographic, and lithographic printing. Transforms a library of spot colors into easy-to-manage, digital libraries of process color recipes that are based on a print condition—typically an ink set, press, and substrate.
- Supports color blends of 4, 5, 6, or 7 process colors.



Kodak ColorFlow Software

Digital Printing

Digital Press Management

- Centrally manage jobs to a variety of digital presses from **Kodak**, and other vendors including **Konica Minolta**, **Canon**, **Ricoh**, **Xerox** and **HP**. Includes:
 - » **Digital Submit:** drag-and-drop job interface that can be used with RBA to automate job creation, file processing, imposition and output to a digital press.
 - » **Digital Direct:** digital press and job management interface that simplifies the management of high volumes of digital print work. Jobs can be filtered, sorted and queued to multiple digital presses. Job progress and press status can be viewed from one window.
 - » **One Managed Press Connection:** Connectivity to one digital front end (DFE) or controller device.

One Additional Digital Press Connection

- Upgrade for Digital Press Management.
- Adds an additional digital press connection.

Acrobat Plug-ins

PDF Production Tools

- Includes five production tools:
 - » **PDF PlateBuilder:** Tools for selecting and isolating common elements of a job to quickly create varnish plates, white plates and bump plates.
 - » **PDF File Editor:** Tools that facilitate check-out, conversion and editing of files using **Adobe Illustrator** and **Adobe Photoshop** Software. Once editing is complete, the revised file is checked back into **Prinergy** Workflow for processing.
 - » **PDF Trap Editor:** Interactive, vector-based trapping tools. Trap entire pages or selected objects; edit and add traps; set trap geometry; create keepaway traps; and view trapping. Unique packaging trapping tools for the flexo and offset markets.
 - » **PDF Compare:** Quickly determines the differences between revisions of PDF files. Using **Adobe Acrobat** layers, the common elements are separated from the changed elements for easy inspection.
 - » **PDF Merge:** Merges new or changed elements in a design file into the production-ready PDF file, preserving existing traps, **DotShop** settings, and overprint changes made previously to the production-ready file.

DotShop Composer

- Provides access to **Prinergy** Workflow screening options within **Adobe Acrobat** Software, allowing operators to apply per object and per separation **ColorFlow** setup, curve, custom dot shape, line ruling, dot size, angle set, and angle orientation.

Kodak Screening Solutions

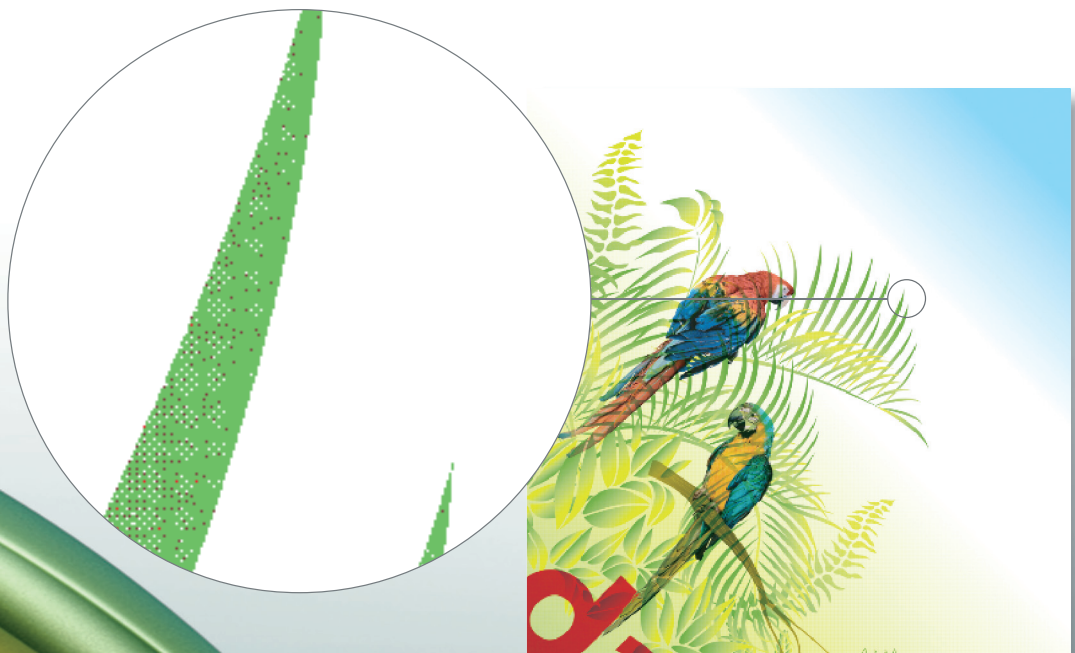
Advanced Screening

- A system-wide license that includes four unique **Kodak** Screening Solutions:
 - » **Kodak Maxtone Screening Technology:** A hybrid of AM and FM screening technology. Useful for flexo packaging and other applications, to overcome highlight and shadow reproduction limitations. Maxtone comes in three variations, each of which can be used in various printing conditions:
 - Maxtone FX
 - Maxtone SX
 - Maxtone CX
 - » **Kodak HyperFlex Screening Technology:** Produces smaller, more stable dots on flexographic plates, allowing highlights to be reproduced more faithfully, with a less discernible transition in blends or vignettes.
 - » **Kodak DigiCap Screening:** Applies a user definable texture pattern to the surface of a flexo printing plate to improve ink transfer and the appearance of solid areas.
 - » **Raster Scaling:** Randomizes pixel removal and prevents visible artifacts when CopyDot images are contained in electronic artwork

Staccato Screening

- Advanced, second-order FM screening technology that produces high-fidelity, continuous tone images with fine detail and an extended color gamut.
- This option includes a system-wide license for all **Staccato** screen sizes as well as training kits.

New in **Prinergy 6.1: Kodak Maxtone SX** Flexographic screening technology!



Web-to-Print Integration

OPS/DSF Integration

- License and services required for integrating the EFI OPS or EFI DSF Web-to-Print Solutions with **Prinerogy** Workflow. Via RBA, production files and order information are received (in cXML format) and processed in **Prinerogy** Workflow when a new order is created.

Refine Options

Advanced Preflighting

- Advanced profile-based preflighting helps identify and correct problems in input files. Includes a profile editor, so users can create their own profiles. Generates a preflight report that itemizes the results, with links to the objects in the PDF digital master.

PDF Batch Trapping

- Additional PDF Batch Trapping engine to a **Prinerogy** System.
- Automatically traps PDF pages during the refining process. Includes advanced features like enhanced trap corner geometry settings and keepaway traps for packaging work.
- More trap engines can be added based on your production needs.

Refining

- Additional Refine engine (or Job Ticket Processor, JTP) to a **Prinerogy** System.
- Provides standard preflight, normalizing, color management, and optimizing of input **PostScript**, PDF, and other file formats into a PDF or PDF/X digital master.
- Expandable to meet customers' production needs.

System Options

Dashboard

- Consolidated display of job status through a web browser interface to an unlimited number of users.

Archive

- Job archiving, retrieval and purging capabilities to **Prinerogy** Workflow. Jobs and associated files, history and settings can be stored on nearline disk volumes for future retrieval and re-processing/output.

Hot Standby Software

- Minimizes downtime: the database server is replicated on a secondary, so the system can continue to run with no data loss if primary fails. Also known as Emergency Platemaking or EPM+.

Job Replication

- Protects job data by providing real-time backup of the RAID data storage to a second server with RAID. If the main RAID fails, production can be quickly reconfigured to use the replicated job data on the second server.

Output Options

Regional Versioning

- Supports regional versioned workflows within a **Prinerigy** System by allowing multiple page assignments per page set position, including layered PDFs.

PrintLink Ink Key Setting

- Generates JDF-compliant Print Production Format (PPF) files that define ink key settings for the plate.

Web Growth Compensation

- Provides linear and non-linear distortion of individual plate separations to compensate for paper stretch in web press operations.

Digital Blueline Proofing (Signature Booklet)

- Cuts and collates pages from an imposed flat and sends the pages to a printer in 1-up or 2-up reader order.

Output Renderer

- Adds one additional high-resolution output engine (or Job Ticket Processor, JTP). Renders PDF files and populated imposition job tickets in JDF and PJTF formats.
- Expandable to meet customers' production needs.

Training

Prinerigy Workflow Training

- A variety of classroom, onsite and online training options are available for managers and prepress operators. Attendees learn to configure their system and gain insight into workflow optimization.

Produced using Kodak Technologies.

Eastman Kodak Company
343 State Street
Rochester, NY 14650 USA

© Kodak, 2014. Kodak, ColorFlow, DigiCap, HyperFlex, InSite, Maxtone, NexPress, Pandora, Preps, Prinerigy, and Staccato are trademarks of Kodak.

Technical specifications subject to change.

W.UWS.050.08.14.en.01 (K-840)

The Kodak logo is displayed in a bold, red, sans-serif font. It is positioned on the right side of the page, partially overlapping a large, stylized yellow and orange graphic element that resembles a large arrow or a stylized 'K' shape pointing towards the top right. The background of the page features abstract, flowing shapes in shades of blue, green, and yellow.